

ECONOMY

SAFETY

COMMUNITY

More (free) parking in Amesbury

More signs from Solstice Services into Amesbury, including parking

Improved crossing points

Improved relationship between traffic (including HGVs) and pedestrians in villages e.g. Chitterne

Tackle HGV / Coach traffic through Chitterne

Community facilities

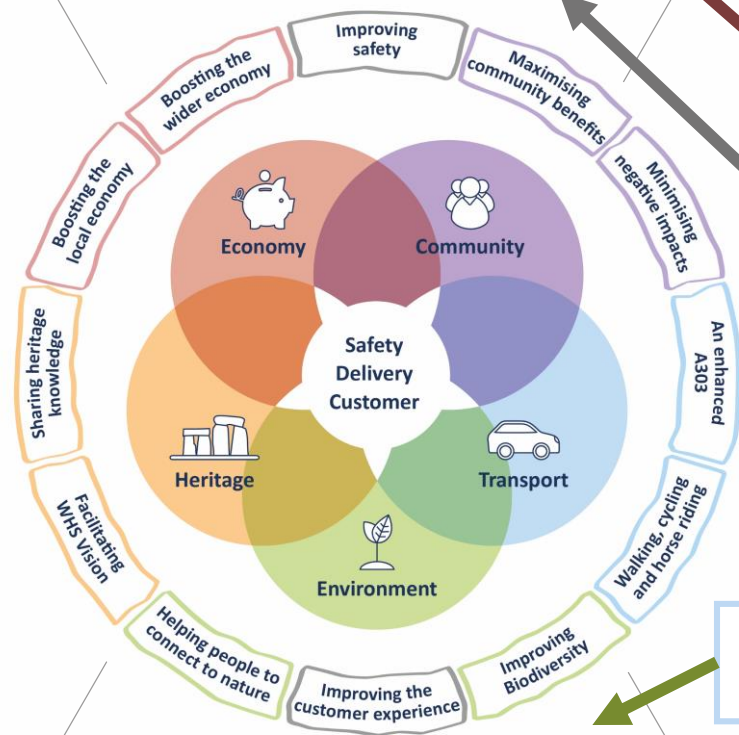
Understanding and working with re-basing

New pubs / restaurants

Author / artist / musician in residence

Encourage tourists to stay in the area longer

Make Amesbury a visitor 'Hub'



Off-road cycleways

TRANSPORT

HERITAGE

Shuttle service from Amesbury to Stonehenge

Viewpoint at Kings Barrow Ridge / towards the Stones

Leaflets promoting walking routes in the WHS

Cycle hire facility

Better surfacing on bridleways

Access to Yarnbury Hill Fort

Parking (free) in the WHS

Plant junipers and sloes on grassland

Better public transport – including for tourists

Join up with other paths e.g. Monarch's Way

Joined up approach from Salisbury to WHS for NMUs

ENVIRONMENT

COMMUNITY FORUM IDEAS JUNE 2018

Access to Yarnbury Hill Fort
Sign posting to car parking in Amesbury
Signage to Town Centre from Solstice Services
Free parking in Amesbury
Pedestrian access to Countess Roundabout
A3028 / A303 junction needs improving
Minimise noise impact of traffic on Countess Flyover
Shuttle service from Amesbury to Stonehenge - create a hub, for parking, buses and horsedrawn transport
Improved surfacing on bridleways
Off-road cycleways along local A roads
Footpath from Shrewton to Visitor's Centre using existing path to Winterbourne Stoke link to private path at Foredown Barn to just short of Airmen's corner
Make use of existing PROW to facilitate without reducing access to minority groups
Cycle and walking routes on Stonehenge Estate (circular) with parking
Pamphlets promoting walking routes
Viewpoint at Kings Barrow with adjacent parking
Improving byways and footpaths
Interpretation panels
We are already connected. We don't want an influx of visitors. No carparks - not 100% which village - Berwick St James?
Please keep our sleepy village sleepy. No extra cycle routes, car parks, etc. Berwick St James.
Keep nature as it is.
Safe / improved crossings.
When looking at linking routes, beware of private land restrictions
Make the new road as quiet and unobtrusive as possible. Plant trees
Keep tourists near to Stonehenge.

Stonehenge World Heritage Site - 'Providing access 'carparks'?
Amesbury Visitor 'Hub?' West of Amesbury, shuttle to Stones, walk, horsedrawn transport, parking, shops
Viewing platform towards Stones
NB D10 Larkhill - c4600 extra homes - how can transport infrastructure cope
Cycle hire livery between Winterbourne Stoke, Shrewton and Amesbury
No Wiltshire West cycle way, and EHT are non-communicative over byways etc
Project to reinstate junipers on chalk downland - and produce Wiltshire Gin! (seconded?)
Focus on ease of transport for tourists using public transport
From Salisbury to Stonehenge WHS - joined up footpaths / cycleways / bridleways. Many tourists walk, especially during the Solstice. Clearer signage - which should also reference local amenities through Woodford Valley (3 pubs, churches etc) (seconded)
Link south at Yarnbury Castle towards Grovely Wood and the Monarch's Way (in the Woodford Valley?)
Develop Romano-British remains in Berwick St James for tourism
Chitterne B390 - too many buses on road. Impossible for walkers / cyclists / horse riders to access some bridleways from B390. If we had access off B390 (south) one could ride / cycle to Yarnbury Castle and along the detrunked A303. If buses were removed from the road, the B390 across Salisbury Plain could become much more user friendly for cyclists / riders etc.
NB incorrect weight restriction of 18T (on B390 at Chitterne?) and, on account of lack of Wiltshire police budget, leads to nil enforcement (also applies to Larkhill, Packway, B3086 and B3083)
EHT need to communicate more with local people. We were told 2 years ago about the new toilets for the coach park to prevent cross pollination with the car park traffic. These took 2 years to build. We were also told there would be a purpose-built motorhome / caravan park. This is there but not being used. Caravans etc are still being parked at the top of the Stonehenge Visitors Centre carpark and are a blot on the landscape.
Encourage tourists to stay in the area longer
Chitterne pub / Shrewton pub restaurant
Chitterne bus problem - buses on the B390 going to and from Stonehenge Visitors Centre is a narrow road, with no pavement in places, causing a severance problem. As part of the A303 Scheme, we should maximise the benefit of a huge investment and reconfigure the Visitors Centre carpark and Airmen's corner junctions to make coaches / buses use the A303 and not small roads (on the way to Bath?)
Village hall, orchard and allotments for Winterbourne Stoke
Author in residence
Army rebasing - huge number of new homes each with, say 2 cars. No planning by WC to accommodate this. Signage, speed reduction issues etc. Not quite sure how this could be improved.
Local traffic will not disappear once tunnel built - volumes through Shrewton and Chitterne will increase - no planning for this by WC.
Rollestone crossroads should be treated as a major part of the commencement of the project. Shrewton needs buildouts at London Road. Presently the walk down into the village is extremely dangerous.
Ability to ride a road bike across the wider area. Bridleways / byways tend to be unsurfaced. Currently there is no safe route for someone on a road bike between Shrewton and Amesbury (including the Packway?)
Sloes as well as juniper, for Sloe Gin!