

Connected Communities project

Introductions

- Carolynne Morgan – Transport Planner/Stakeholder engagement, AmW
- Ross Pascoe – Transport Planner/ Stakeholder engagement, AmW
- Laurie Robinson – WCHR Assessor, AmW
- Tim Harper – Local Routes, AmW

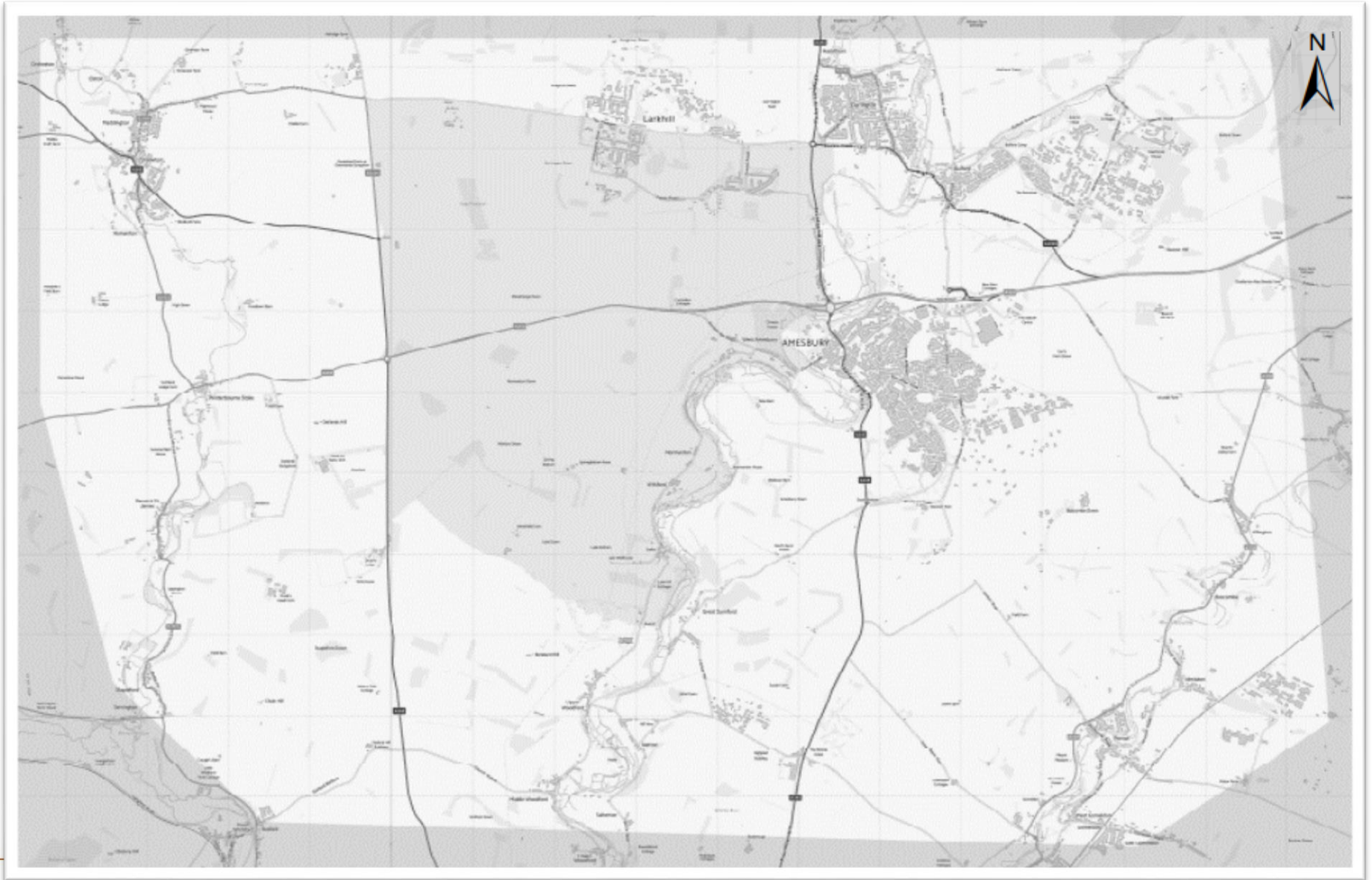


Purpose

- Consider existing sustainable transport links between communities within the study area
 - Commuting
 - Schools
 - Healthcare facilities
 - Shops / local amenities
- Sustainable transport
 - Walking
 - Cycling
 - Horse-riding
 - Public Transport - Bus services
- Identify gaps where provision does not meet demand



Study Area



Findings to Date

- Collision data



Collision Data (2014-2018)

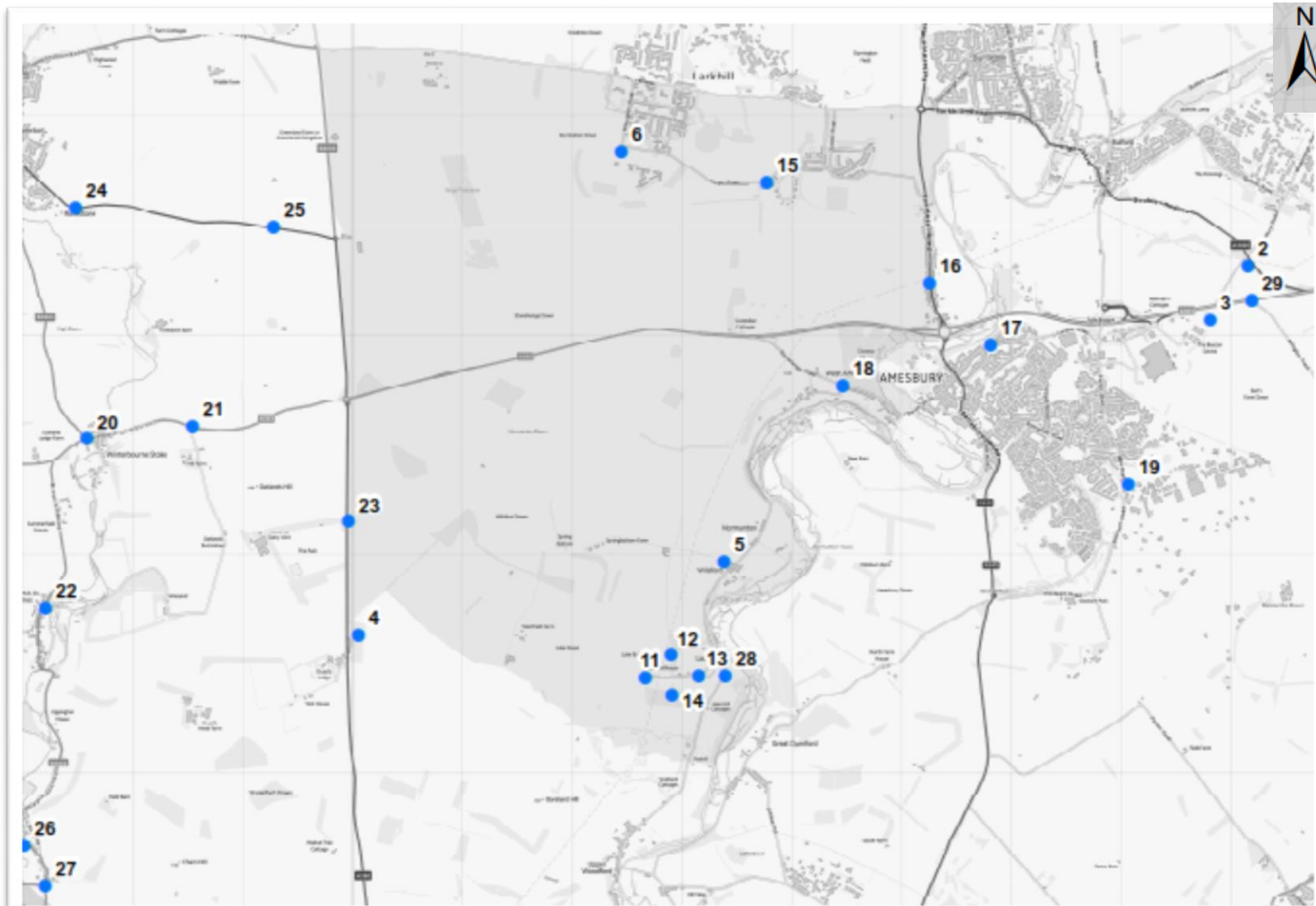


Findings to Date

- Collision data
- Walking, cycling & equestrian counts



Walking, Cycling, & Equestrian Counts

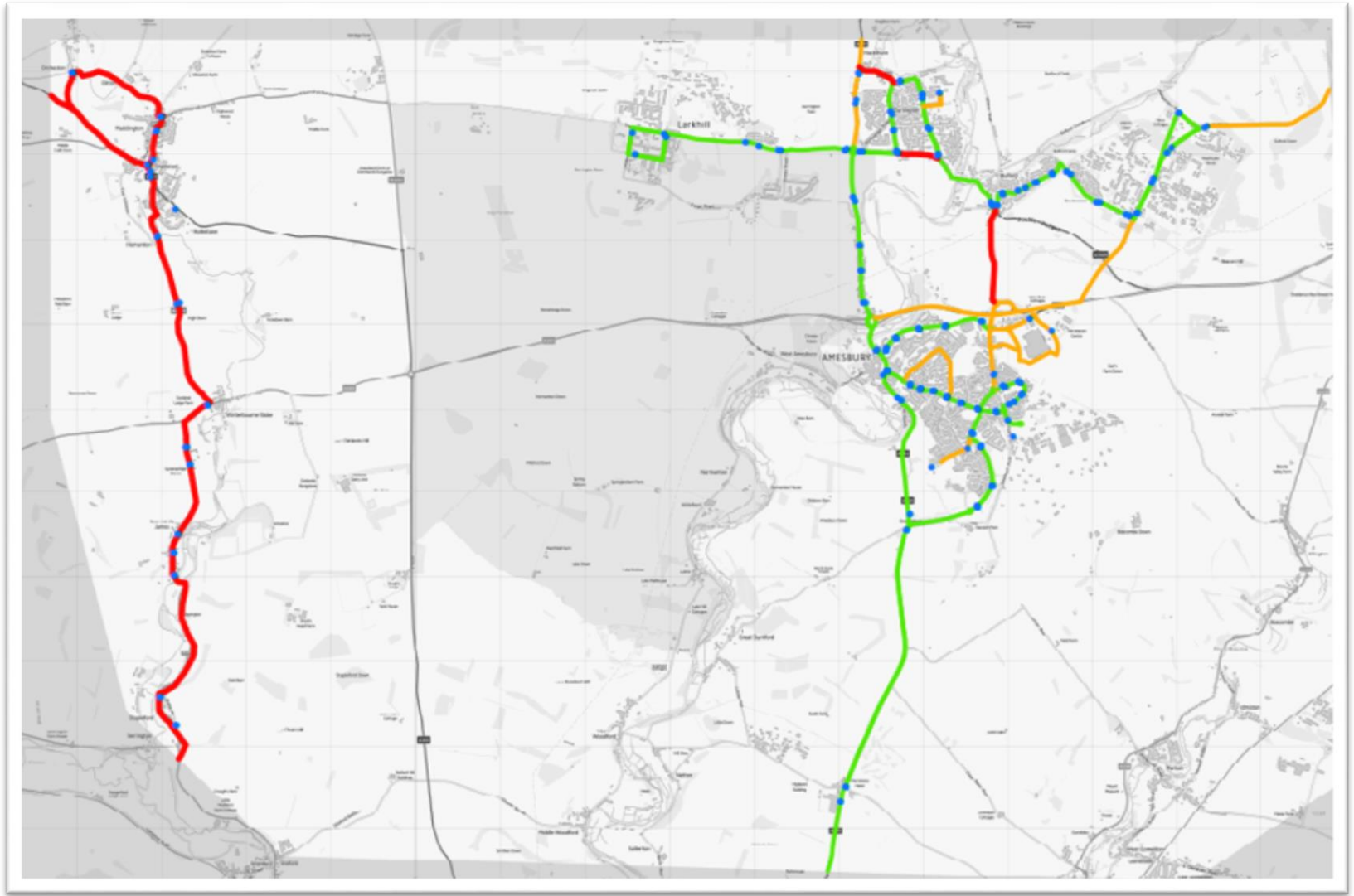


Findings to Date

- Collision data
- Walking, cycling & equestrian counts
- Public transport & bus stop locations



Public Transport & Bus Stop Locations

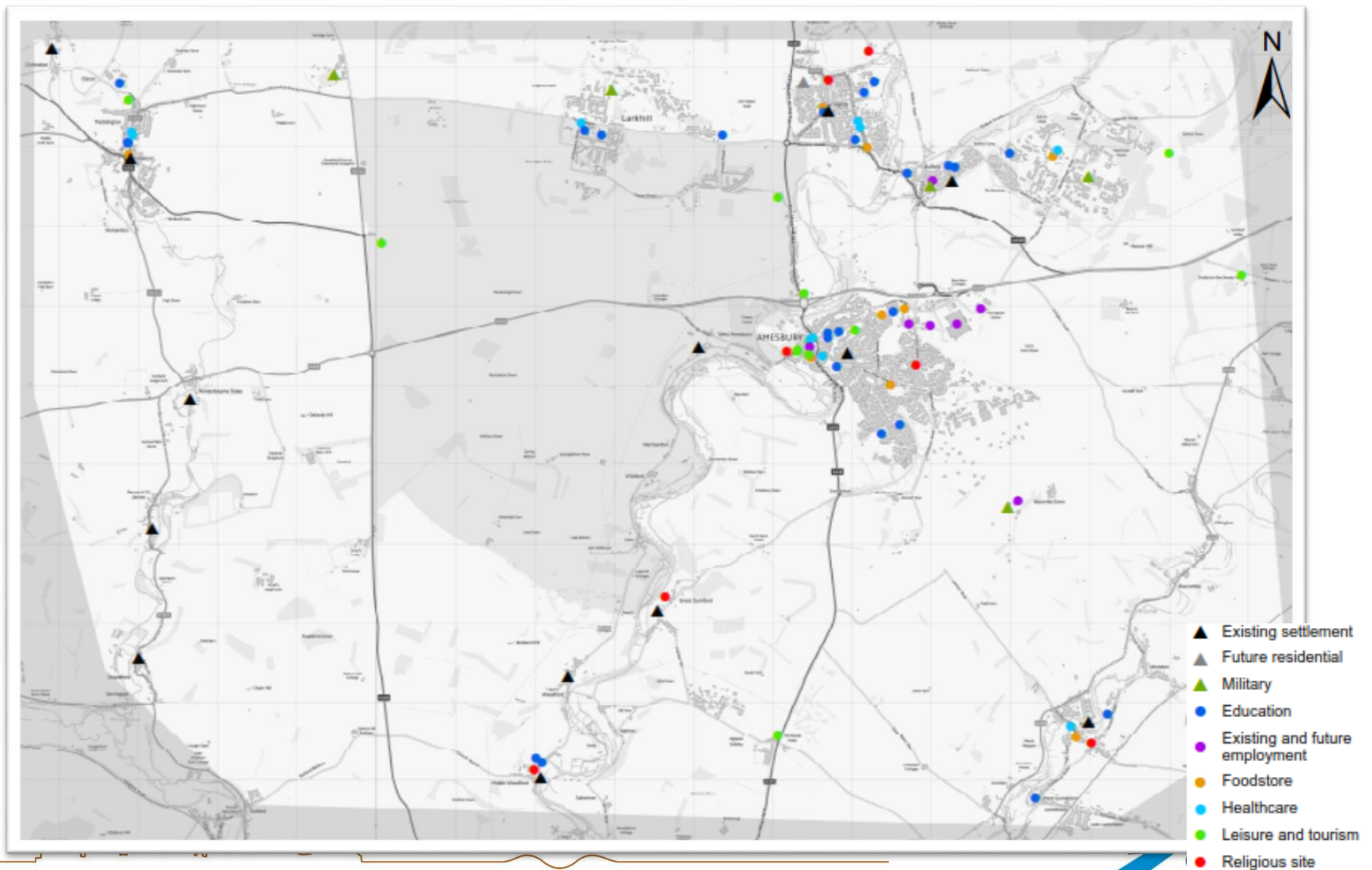


Findings to Date

- Collision data
- Walking, cycling & equestrian counts
- Public transport & bus stop locations
- **Origins & destinations**



Origins & Destinations

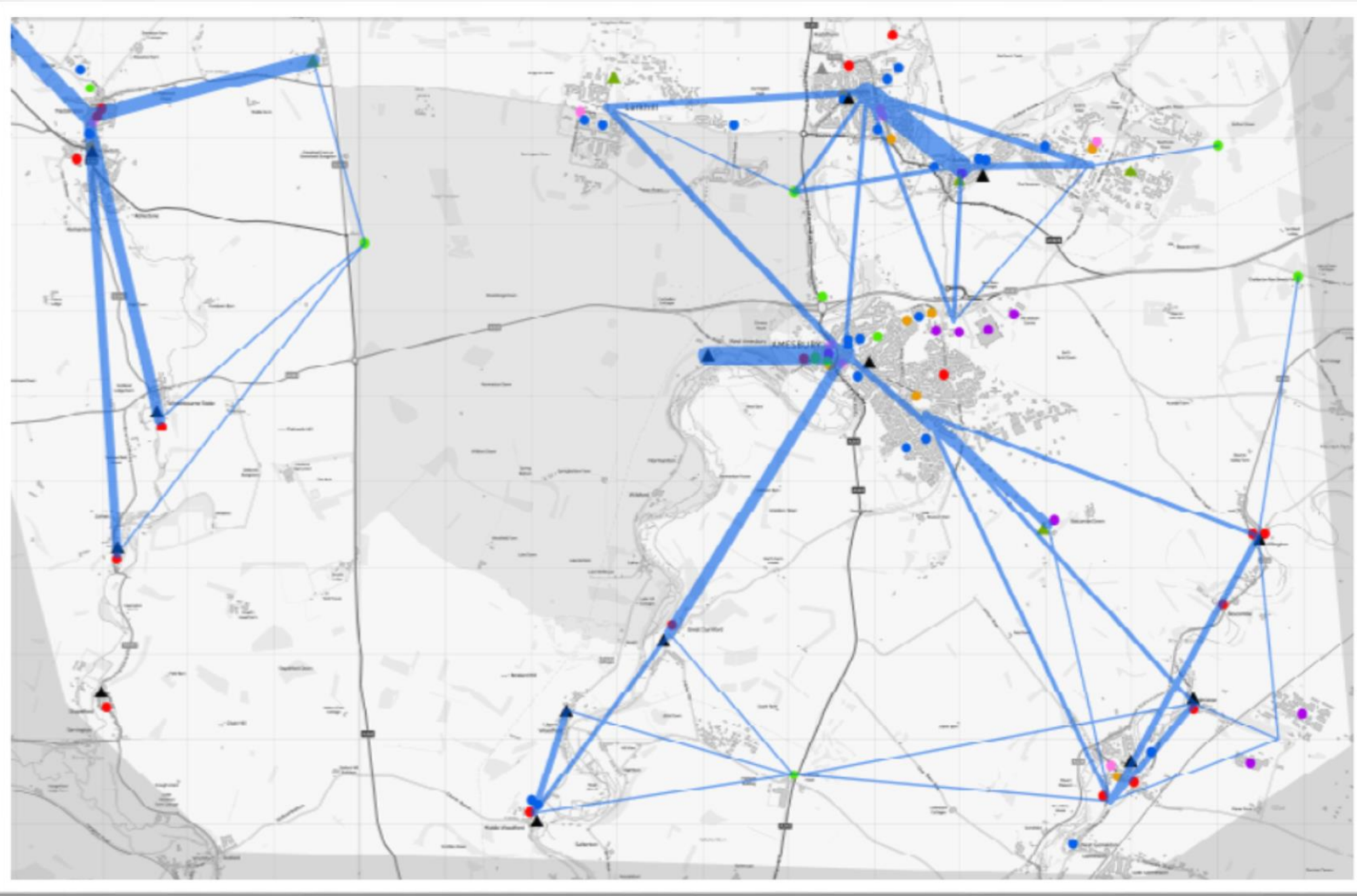


Findings to Date

- Collision data
- Walking, cycling & equestrian counts
- Public transport & bus stop locations
- Origins & destinations
 - trip generators



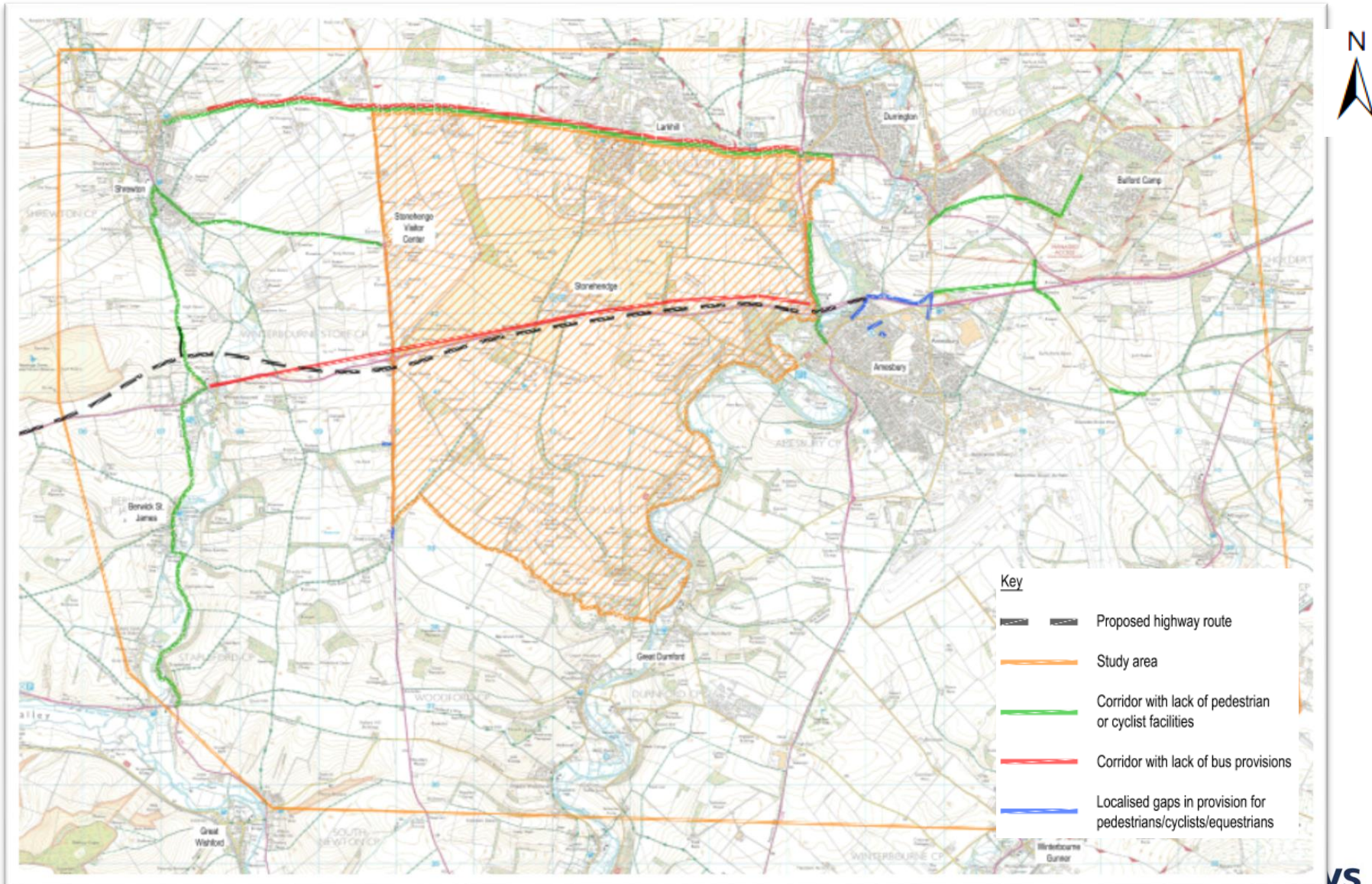
Trip Generators



- ▲ Existing settlement
- ▲ Future residential
- ▲ Military
- Education
- Existing and future employment
- Foodstore
- Healthcare
- Leisure and tourism
- Religious site
- Grouped desire lines



Initial Gap Identification



Exercise

1. Do your experiences agree with our findings?
2. Are we considering the correct corridors?
3. Are there any specific improvements to facilities you would suggest?
 - pedestrians
 - cyclists
 - equestrians
 - bus users



Next steps

- Review comments from workshop
- Record in Connected Communities report
- Identify potential long term improvements

